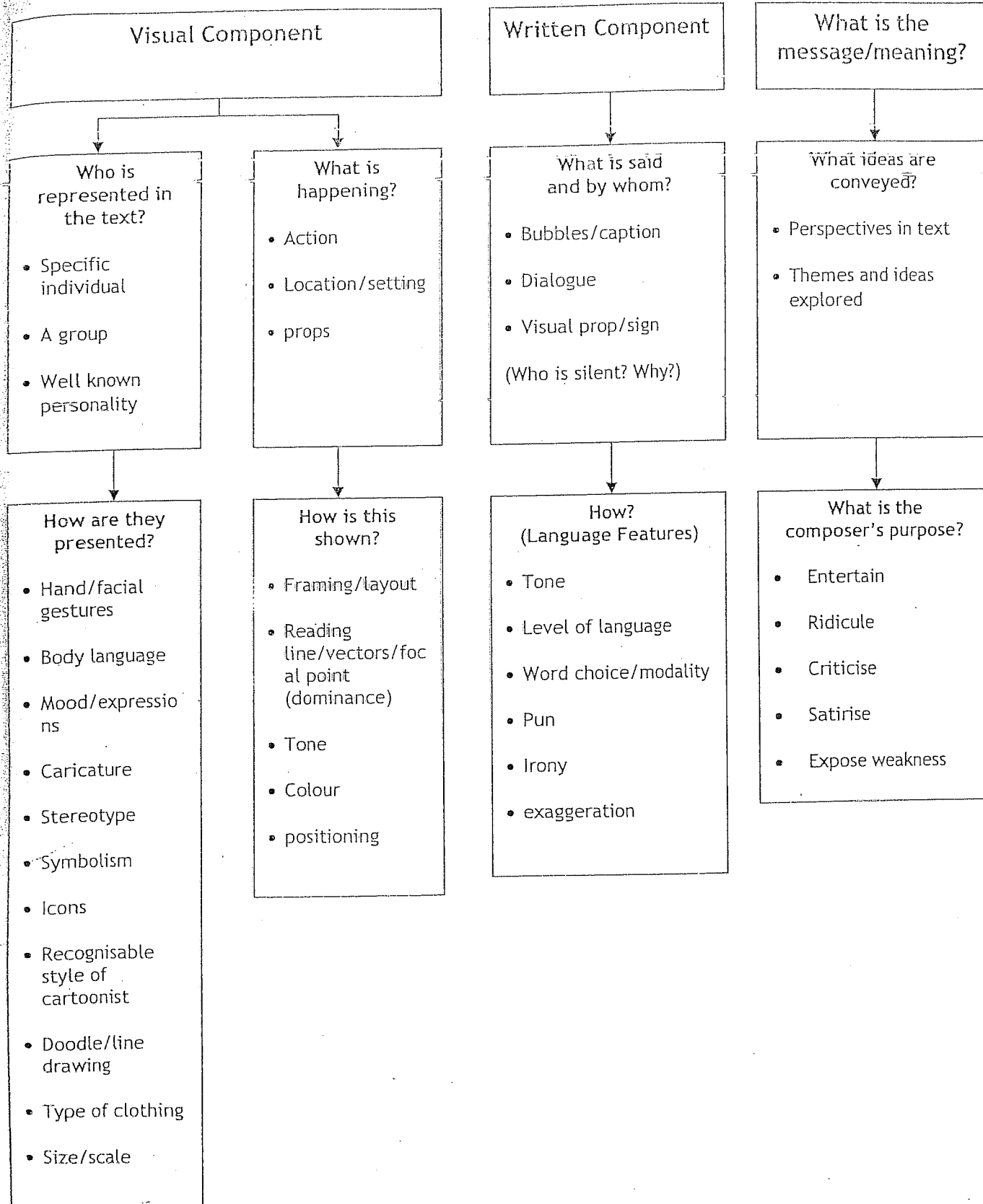


## CARTOON/GRAPHIC ANALYSIS CHECKLIST



# CARTOON/GRAPHIC ANALYSIS SHEET

Visual Component

Written Component

What is the message/meaning?

Who is represented in the text?

What is happening?

What is said and by whom?

What ideas are conveyed?

How are they presented?

How is this shown?

How? (Language Features)

What is the composer's purpose?